



REWARDS CATALOGUE 2026



1x Carbon Credit

(Silvicultura, VCS, Estándar de Oro)



★
25.000
points

★
25.000
points



Amazon Fire TV Stick

Apple AirTag



★
30.000
points

★
45.000
points



Stanley Quencher H2.0 FlowState



The Ordinary The Daily Set

Squalane Cleanser, Hyaluronic Acid 2% + B5, and Natural Moisturizing Factors + HA



70.000
points

75.000
points



Amazon Echo Dot

Ninja Blast Blender

Portable | Rechargeable



75.000
points

100.000
points



Anker Powerbank MagGo

Qi2 Certified 15W Ultra-Fast | MagSafe-
Compatible



JBL Charge 5 Portable Speaker



★
125,000
points

★
150,000
points



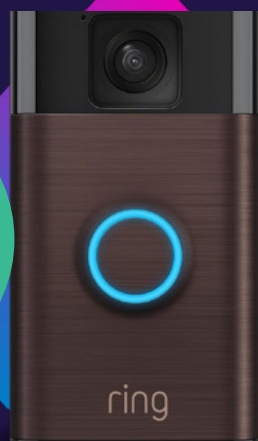
Amazon Fire TV Soundbar

Apple AirPods 4



★
150,000
points

★
150,000
points



Ring Video Doorbell



Amazon Kindle Paperwhite

(16 GB)



★
170.000
points

★
200.000
points



Bose Soundlink Mini II SE

MSI - Curved Gaming Display

24" (1500R) | Optix G24C6P



★
220.000
points

★
260.000
points



Nespresso Vertuo Plus

Coffee and Espresso Maker by De'Longhi



Ninja Foodi DualZone Smart XL Air Fryer



★
270.000
points

★
340.000
points



Neutrogena Hydroboost Pack

Hyaluronic Acid Water Gel 50g + Serum
+ Eye Cream

Shark CryoGlow LED Face Mask



★
340.000
points

★
450.000
points



DREAME H12 PRO Wet Dry Vacuum Cleaner



Sony Playstation 5

Slim Digital | 1tb



450.000
points

450.000
points



Weber Master-Touch Charcoal Grill

Weber 14501001 | 22-Inch Black

Apple iPad 2025

11-inch | Wi-Fi | 128GB | Silver | Chip A16



450.000
points

460.000
points

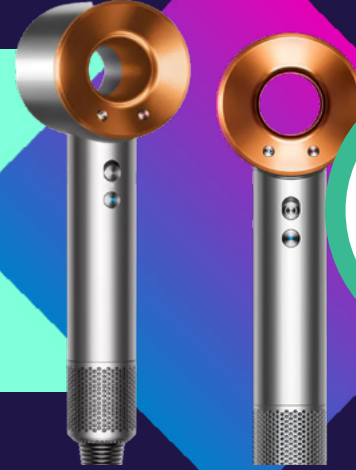


LG UltraWide Gaming Monitor

LG 34GP63A-B | 34"



Dyson Supersonic™ Hair Dryer



★
500.000
points

★
500.000
points



Ninja SLUSHi

RapidChill Technology | 88 oz. |
Frozen Drink & Slushie Machine |
5 Preset Programs | Black

Apple AirPods MAX

Sky Blue



★
530.000
points

★
550.000
points



Xbox Series X

1TB



SAMSUNG Galaxy-Z Flip4

8GB | 256GB Gray




550.000
points


700.000
points



Nintendo Switch 2

Apple Watch Series 6




780.000
points


1.200.000
points



Apple iPhone 17

256GB | Chip A19 | eSIM | Black



Smart Electric Thermomixer

Cooking Robot Machine



★
1.700.000
points

★
1.700.000
points



Samsung Galaxy S25 Ultra

256GB with S-Pen

Disclaimer: All images in this catalogue are for reference purposes only. Actual products may vary in appearance, color, or specifications due to lighting, screen resolution, or product updates. Please refer to product descriptions or contact us for detailed information.

DONATIONS

★
50.000
points

A meaningful option. As an alternative to traditional gifts, your company can choose to redeem its points by supporting social causes. This option allows you to contribute to associations focused on education, food security, housing, and animal protection. It's a way to transform rewards into positive impact on behalf of your company.



Animal protection and welfare

Support initiatives that promote responsible pet adoption, spaying/neutering, and compassion for animals, helping build a more caring society.



Community development and poverty alleviation

Help improve living conditions in vulnerable communities through teamwork between local residents and dedicated volunteers.



Child protection and access to education

Support programs that protect children from harm, promote gender equality, and ensure access to quality education.



Food and social assistance

Contribute to an organization that provides food, hot meals, and social support to individuals and families facing economic hardship.





Terms and Conditions

1. Introduction

Welcome to the Loyalty Green Rewards Program (“Program”), offered by Loyalty Logistics (“Company,” “we,” “us,” or “our”). By enrolling in the Program, you agree to comply with and be bound by these Terms and Conditions (“Terms”). Please read them carefully.

2. Program Enrollment

2.1 Eligibility: The Program is open to all customers using transportation services with the Company. By enrolling, you affirm that you meet the eligibility requirements.

2.2 Enrollment: To enroll in the Program, customers must complete the registration process through our website or with their sales representative.

3. Point Accumulation and Rewards

3.1 Point Accumulation: Points are accumulated based on the value of the loads you transport with us, according to the following table:

- Loads under \$1,000 USD: 500 points
- Loads \$1,000 to \$2,000 USD: 1,000 points
- Loads \$2,000 to \$3,000 USD: 2,000 points
- Loads \$3,000 to \$4,000 USD: 3,000 points
- Loads \$4,000 to \$5,000 USD: 4,000 points
- Loads \$5,000 to \$6,000 USD: 5,000 points
- Loads over \$6,000 USD: 6,000 points

3.2 Points Table Modification: The Company reserves the right to modify the points accumulation table at any time and at its sole discretion. Changes will be notified to members through their registered contact information.

3.3 Referral Rewards: You can earn 20,000 additional points for each new customer you refer to our services. Points will be awarded once the referred customer successfully completes their first load.

3.4 Catalog Products: Members can redeem their accumulated points for products available in the rewards catalog.



4. Environmental Commitment

4.1 Welcome Trees: Upon completing your first load with us, we plant 50 trees in your name as part of our commitment to environmental sustainability.

4.2 Tree per Load: For each additional load you transport with us, we plant 1 additional tree in your name.

4.3 Reforestation Certificate: Members receive an official reforestation certificate and access to real-time monitoring of their forest growth through our partner Evergreen.

5. Merchandise Redemption

5.1 Point Redemption: Points accumulated through the Program can be redeemed for merchandise. The redemption process and range of available merchandise are detailed in our rewards catalog.

5.2 Redemption Requirements: To redeem rewards, the customer must meet the following requirements at the time of the request:

- a) Have no invoices overdue for more than 30 days.
- b) Have active loads within the last 30 days.

5.3 Maximum Redemption per Quarter: Customers may redeem a maximum of 1,700,000 points per quarter. This limit corresponds to the highest-value reward available in the catalog.

6. General Conditions

6.1 Program Changes: The Company reserves the right to modify, suspend, or terminate the Program, or any part of it, at any time without prior notice. This includes changing the point accumulation process, redemption methods, points table, and any other terms of the Program.

6.2 Point Expiration: Accumulated points are subject to the following expiration rules:

- a) Expiration due to inactivity: If the customer does not generate new points for 12 consecutive months, all accumulated points will automatically expire.
- b) Expiration due to non-redemption: Points that are not redeemed within 12 months following their generation will automatically expire.

6.3 Account Termination: The Company reserves the right to terminate your Program account if you violate these Terms, engage in fraudulent activities, or misuse the Program.

6.4 Voluntary Participation: Participation in the Program is entirely voluntary. No company is obligated to enroll or participate.

6.5 Internal Distribution: Each participating company has the autonomy to decide how to distribute the points and rewards obtained among its employees or departments, without intervention from Loyalty Logistics.



6.6 Subscription Administrator: Each company must designate a person responsible for administering the subscription and participation in the Program.

6.7 Code of Ethics Compliance: It is the responsibility of each participating company to ensure that its participation aligns with its own code of ethics and internal policies.

6.8 Terms Consultation: The terms and conditions are available at: <https://www.whyloyalty.com/terms-and-conditions-lgr/>

6.9 Non-Transferability: Points cannot be transferred between accounts, sold, or redeemed for cash.

6.10 Point Value Subject to Change: The value of points and the rewards catalog may be modified by the Company at any time.

6.11 Maximum Accumulation Limit: Accumulated points have a maximum cap of 2,000,000 points per account. Once this limit is reached, no additional points will be generated until the customer redeems part of their balance.

7. Limitation of Liability

The Company will not be liable for any direct, indirect, incidental, special, or consequential damages arising out of the Program, including the loss of points or rewards due to technical issues, Program changes, or account termination.

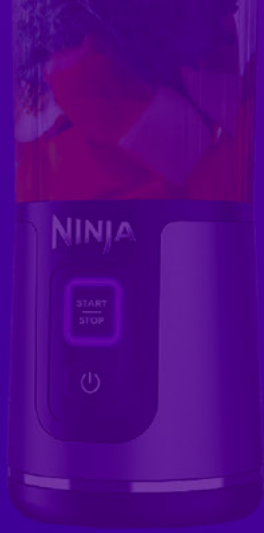
8. Governing Law

These Terms are governed by and interpreted in accordance with the Civil Laws of the United States. Any dispute will be subject to the exclusive jurisdiction of the courts of the United States.

9. Contact Information

For any questions related to the Program, please contact us at: greenrewards@whyloyalty.com

By enrolling in the Loyalty Green Rewards Program, you acknowledge that you have read, understood, and accepted these Terms and Conditions.



LOYALTY®
GREEN REWARDS

